



ASKING PRICE

**£214,950**

**Prospect Mount**

Keighley, BD22 6LS



## PROPERTY SUMMARY

We are pleased to offer to the market this well presented, three bedroom semi-detached property on the popular Prospect Mount. Situated close to local amenities, transport links and schools, this property will appeal to a variety of buyers and must be seen to be appreciated.

Sat on a generous plot, this property has a spectacular garden providing panoramic views over the valley, it also features ample parking making it perfect for a family.

Call us today to arrange a viewing of this lovely home!

3



1



1













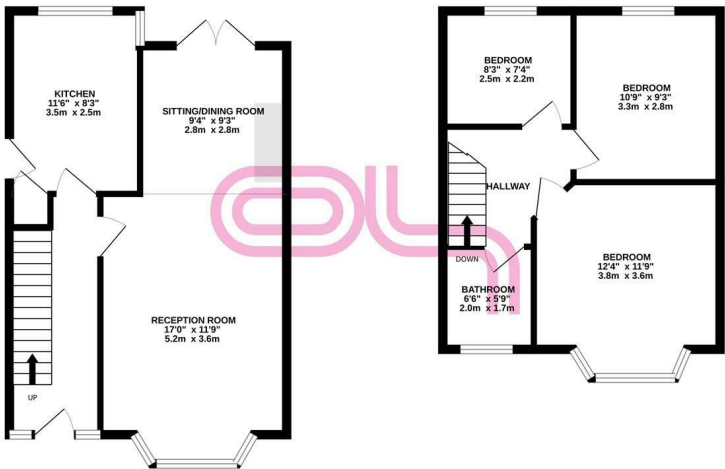






GROUND FLOOR  
458 sq.ft. (42.5 sq.m.) approx.

1ST FLOOR  
384 sq.ft. (35.7 sq.m.) approx.




TOTAL FLOOR AREA : 842 sq.ft. (78.2 sq.m.) approx.  
While every attempt has been made to ensure the accuracy of the floorplan contained here, measurements of areas, windows, rooms and any other items are approximate and no responsibility is taken for any error, omission or mis-statement. This plan is for illustrative purposes only and should be used as such by any prospective purchaser. The services, systems and appliances shown have not been tested and no guarantee as to their operability or efficiency can be given.  
Made with MapInfo 12.0.0

3

1

1

Energy Efficiency Rating		
	Current	Potential
Very energy efficient - lower running costs		
(92 plus) A		84
(81-91) B		
(69-80) C		67
(55-68) D		
(39-54) E		
(21-38) F		
(1-20) G		
Not energy efficient - higher running costs		
England & Wales		EU Directive 2002/91/EC 



Agents Note: Whilst every care has been taken to prepare these particulars, they are for guidance purposes only. All measurements are approximate and are for general guidance purposes only and whilst every care has been taken to ensure their accuracy, they should not be relied upon and potential buyers/tenants are advised to recheck the measurements.